

**Benton-Franklin  
Council of Governments  
Transportation Office**

**Tri-MATS**



**Unified Planning Work Program**

Includes  
Benton/Franklin/Walla Walla MPO and RTPO Program  
and the WSDOT South Central Region

Adopted by the BFCG Board May 20, 2011

For State Fiscal Year 2012  
July 1, 2011 to June 30, 2012

## Table of Contents:

<i>Introduction</i>	<i>1</i>
<i>Fiscal Year 2011 Accomplishments</i>	<i>1</i>
<i>Proposed Funding Sources</i>	<i>1</i>
<i>MPO/RTPO Regional Transportation Issues</i>	<i>2</i>
<i>Transportation Issues to be Addressed During the Next Year</i>	<i>3</i>
<i>Work Element Descriptions</i>	<i>3</i>
220 — Program Administration, Interagency Coordination, and Public Involvement	4
221 — Regional Transportation Products	6
222 — Traffic Data Management and Monitoring Programs	8
223 - RTPO Long-Range Transportation Planning & Washington State Transportation Issues	9
<i>Revenue Summary</i>	<i>10</i>
<i>Expenditure Summary</i>	<i>11</i>
<i>MPO/RTPO Boundaries Map</i>	<i>12</i>
<i>2011 Staff Chart</i>	<i>13</i>
<i>TRI-MATS RTPO POLICY ADVISORY COMMITTEE 2011</i>	<i>14</i>
<i>TRI-MATS RTPO TECHNICAL ADVISORY COMMITTEE 2011</i>	<i>16</i>
<i>MPO/RTPO STRUCTURE</i>	<i>18</i>
Unfunded Planning Studies and Projects (Unranked)	19
<i>Acronyms List</i>	<i>20</i>

## Introduction

The Unified Planning Work Program (UPWP) describes transportation planning activities proposed to be undertaken during the next fiscal year. These activities support a continuing, coordinated, and comprehensive transportation planning process, ensuring that projects ultimately destined for implementation are necessary, feasible, and in the best interest of the Tri-Cities Metropolitan Area and the Benton, Franklin, Walla Walla Regional Transportation Planning Organization (RTPO). Identification of these activities includes purpose, generalized scope, and financial resources necessary to complete the task. All tasks included in the UPWP are a direct result of issues, concerns, and problems identified as part of the ongoing Tri-Cities Metropolitan Area Transportation Study (Tri-MATS) Program.

During fiscal year 2012, the UPWP will have work allocated to four basic elements. These elements include Program Administration, Regional Transportation Products, Data Management, and the Washington State Transportation Issues, all of which address local projects having an impact on the regional transportation system. The majority of work is ongoing activities necessary to keep the Tri-MATS program current with updated information and continued interagency coordination through the committee structure. Such activities include Regional Transportation Products that are required to be developed annually and Data Management to support analysis for planning projects, which keeps the Regional Transportation Plan and its subsidiary components accurate.

Special projects are specifically targeted by the Tri-MATS committees to assist one or more local jurisdictions in advancing a project from its conception to the point where decision makers can determine overall feasibility. This sometimes includes pre-design studies, environmental analysis, and cost estimates.

## Fiscal Year 2011 Accomplishments

During fiscal year 2011 most activities were completed. Ongoing activities such as the UPWP, 2011 Transportation Improvement Program (TIP), annual progress report, SAFETEA-LU requirements, and Ben Franklin Transit projects were completed and on schedule. Other accomplishments are specifically identified in the FHWA/WSDOT Annual Report. Key accomplishments included RTPO Annual Traffic Report, GMA Transportation Certifications, 2010-2013 rural and urban STP and TE project selections, 50% completion of the 2011-2030 RTP, Model/TAZ update. Also, the CRCS Bridge Crossing Study and the Human Services Transportation Plan update were completed.

## Proposed Funding Sources

Work tasks identified within this document are typically funded from five basic sources. They are: local funds derived from membership to the Benton-Franklin Council of Governments (BFCG); Federal Highway Administration (FHWA) for basic surface transportation planning; Federal Transit Administration (FTA) for public transportation related planning activities; Regional Transportation Planning Organization (RTPO) Program; and the Washington State Long Range Program.

Funds shown within the UPWP are requested for each UPWP submission and amended as necessary to reflect modifications to the scope of work. If expenditures exceed budgets, the differences are derived from BFCG local funds.

## MPO/RTPO Regional Transportation Issues

- Continue construction of US 12 between the Tri-Cities and Walla Walla into a partial access control 4-lane facility to allow increased capacity for moving freight, lessen congestion, and improve safety.
- Continue work towards the construction of the Red Mountain project. The project has been broken into multiple phases beginning with the Benton City Interchange roundabout.
- Preserve rail lines (including short-haul) as a mode of freight transportation within the RTPO.
- Projected \$ 500 million shortfall (2006-2025 RTP estimate) over the next 20 years to fully fund all Regional Transportation Plan maintenance, preservation, and improvement costs.
- Reopening of Stampede Pass significantly impacted nine at-grade railroad crossings within the Tri-Cities urban area. Two grade separated crossings have been constructed the other 7 are in the planning stage.
- Barging is the second most cost-effective freight mode in the transportation system behind pipeline transport and is an integral part of the region's river transportation system. If "drawdowns" are implemented, it will cause significant impacts to local economies and increase the need for rail and truck use.
- Continue to work on single occupant vehicle (SOV) reduction. The Census 2000 "Work Travel by Mode" in the Tri-Cities is 77% drive-alone; 14% carpool, and 9% other. National average is 76% drive alone; 12% carpool, and 12% other. The Hanford commute is about 90% SOV's in the north Richland area.
- Supporting various modes of travel, the Tri-Cities area has developed over 100 miles of bicycle routes and paths. Ben Franklin Transit serves both the urban and the rural area of Benton County.
- Farm-to-market roads are subject to heavy truck usage and seasonal weight restrictions compromising the efficient movement of freight and goods. Constructing "All Weather Roads" can be the solution.
- Commute Trip Reduction (CTR) could be a Tri-Cities issue in the future.

- Continue to seek capacity, safety, and congestion solutions to US 395 through Pasco and Kennewick (Including a new Columbia River Crossing), Lewis Street Crossing, and improved funding for other local arterials.

## Transportation Issues to be Addressed During the Next Year

Tri-MATS committees, comprised of transportation professionals, have reviewed transportation needs of the metropolitan and rural areas of the three counties and have determined additional planning work should be accomplished. These accomplishments should improve access to state highways, as well as provide information on transit ridership needs and preventative maintenance on local roads.

Based on input from the committees and the federal/state emphasis areas, this one-year program will stress the completion of the Regional Transportation Plan (RTP), continuation of data collection, special reports, and SAFETEA-LU requirements. In addition, the GMA requirements for transportation planning and certification will be continued.

Specific issues will continue to focus on regional safety improvements (reduced collisions = saved lives) and economic development improvements by completing identified projects in the three county area. High profile tasks that will be supported include: Completing the 2011-2030 RTP update, addressing Federal Sustainability Issues, Transportation Demand Management, 2010 Census related tasks including TAZ, MPO/TMA boundary issues, and continuing work on inter-city and inter-jurisdictional public transportation. Intermodal activities will be developed throughout the work program, i.e. continued focus of rail, barge, and freight impacts. Additionally, impacts of TEA-4 reauthorization and designation of TMA/MPO status for Tri-Cities and Walla Walla urban area will be monitored. An unfunded portion of the UPWP (Page 19) lists important planning projects where funding is not secured.

The MPO/RTPO is dedicated to a truly multi-modal transportation system, needed to support our economically diverse region. Roads are very important but marine, rail, air, barge, transit, bike/pedestrian, and freight movements are all necessary to balance the overall system.

## Work Element Descriptions

This work program has been divided into four categories. Each category addresses distinct activities necessary to maintain or enhance the Metropolitan Planning Organization (MPO) process and the RTPO Program. Short narratives and cost estimates are provided for each category and sub-element.

If a task is considered on-going it has been coded with O. If it is considered a product it has been coded with a P.

Additionally, WSDOT's requested incorporation of the six State Transportation Policy Goals as shown on next page. Each task has been coded (1-6) based on the policy it is most closely linked to.

1. Economic Vitality: To promote and develop transportation systems that stimulate, support and enhance the movement of people and goods to ensure a prosperous economy;
2. Preservation: To maintain, preserve and extend the life and utility of prior investments in transportation systems and services;
3. Safety: To provide for and improve the safety and security of transportation customers and the transportation system;
4. Mobility: To improve the predictable movement of goods and people throughout Washington State;
5. Environment: To enhance Washington's quality of life through transportation investments that promote energy conservation, enhance healthy communities, and protect the environment; and
6. Stewardship: To continuously improve the quality, effectiveness, and efficiency of the transportation system.

## **220 — Program Administration, Interagency Coordination, and Public Involvement**

This category provides ongoing staff support for program management and development, augments committee activities, and provides transportation expertise to Tri-MATS members lacking staff capabilities. FTA related activities are included.

- 220.1 Administer and manage the continuing transportation planning program of the MPO and RTPO, including supervision of staff, office management, personnel activities, training conferences, committee participation, travel, etc. O, 6
- 220.2 Staff support for all Tri-MATS and Board committees, including processing and submitting recommendations to WSDOT/FHWA, Legislators, etc. O, 6
- 220.3 Support economic vitality of the metropolitan area and participate in economic development forums and other processes as appropriate. O, 1
- 220.4 Update Tri-MATS operating guidelines, i.e. general documents following MPO expansion into Walla Walla and TEA-4 reauthorization. P, 6
- 220.5 Inter-Jurisdictional Coordination (Includes 25 Jurisdictions) — Meeting attendance to support coordination and cooperation for transportation planning and program solutions. Includes educational activities, newsletter, Good Roads and Transportation Association, forums etc. O, 6
- 220.6 Transportation System Management and Operations - Promote management and operation of the transportation system to meet a broad range of customer's needs. Includes encouragement in innovation, promotion of a national dialogue, and review of performance measures. O, 4
- 220.7 Monitor Safety and Security in all stages of the transportation planning process by assessment of facilities, identification of evacuation routes, and exercise participation with Benton-Franklin-Walla Walla safety agencies. Review WSDOT accident data. O, P, 3

- 220.8 Coordination with environmental resource agencies to ensure early and continuous coordination with environmental resource protection and management plans. Assess impact on RTP and projects. O, 5
- 220.9 Continue to support member jurisdictions in efforts to realize capacity expansion projects within the RTPO. O, 4, 1
- 220.10 Continue education of SAFETEA-LU funding programs, MPO requirements, planning guidelines, TEA 4 Reauthorization, and climate change impacts, etc. O, P, 6
- 220.11 Prepare and support Freight Mobility strategies and strategic corridors. O, 4
- 220.12 Continue TDM/CTR meetings and activities within the MPO area. O, P, 4
- 220.13 Conduct ongoing public outreach, website information efforts, and provide educational materials. Includes working with state/federal legislatures on transportation activities. O, P, 6
- 220.14 Rural STP Program – Administration of Programs for Benton, Franklin and Walla Walla County Jurisdictions. Includes coordination, tracking of funds and obligation balances. O, P, 2
- 220.15 Urban STP Program - Administration of Program for Tri-Cities Urban Jurisdictions. Includes coordination, tracking funds, and obligations. O, P, 2
- 220.16 Enhancement Program –Administration of Program includes staff education per FHWA/WSDOT, call for projects, project processing and ranking, tracking funds and obligating, etc. O, 5
- 220.17 Update Standard Operating Procedures and Inter-local Agreements with BFT/WSDOT/BFCG/FTA/FHWA, etc. O, P, 6
- 220.18 Complete tasks associated with the Tri - Cities Community Round Table (CRT) on transportation. O, P, 6

<b>220</b>	<b>LOCAL</b>	<b>FHWA/FTA</b>	
	<b>\$50,000</b>	<b>\$127,000</b>	<b>\$177,000 (220 MPO)</b>
<b>220</b>	<b>RTPO (State)</b>	<b>\$30,000</b>	<b><u>\$30,000 (220 RTPO)</u></b>
			<b>\$207,000 Total</b>

## **221 — Regional Transportation Products**

This category supports specific reports and documents required to be developed or maintained annually. These documents include: Unified Planning Work Program and Amendments (UPWP), Transportation Improvement Program (TIP), Regional Transportation Plan (RTP) Amendments, Annual Report, other required certifications, and public transportation activities related to FTA. Each report is required to fulfill obligations of the Metropolitan Planning Process and Growth Management Act (GMA) requirements.

- 221.1 UPWP - Development, review and implementation of the Unified Planning Work Program for the upcoming fiscal year. (includes amendments). O, P, 6
- 221.2 Transportation Improvement Program - Federal, State, and locally funded projects, CY 2012-2015. Complete amendments of all transportation projects in the MPO/RTPO as required by FHWA/WSDOT. O, P, 6
- 221.3 Complete the five year update of the Regional Transportation Plan (including amendments as necessary). O, P, 6
- 221.4 Complete FHWA/FTA requirements – Title VI, certifications, annual reports, Intelligent Transportation Systems Architecture (Approved per WSDOT 2004), etc. O, P, 6
- 221.5 Functional Classification – Review process, and amend all requests for changes to the Functional Class System in the RTPO. O, P, 6
- 221.6 GMA Activities – Review level of service methodologies and regional transportation strategies used by jurisdictions. Monitor transportation services and facilities of statewide significance. Review updates of comprehensive plans and countywide planning policies if needed. O, P, 4, 6
- 221.7 Mapping – Includes support mapping for reports, presentations, committee meetings, illustrations for policy decisions, jurisdictional requests, etc. O, P, 6
- 221.8 Certification of Transportation Elements for the RTPO – Continue certification of all RTPO Jurisdictions to comply with GMA requirements and LOS requirements. O, P, 6
- 221.9 Complete all activities and requirements related to the 2010 census. (Includes coordination with the census bureau). Begin update to the 2004 Social and Economic Report. O, P, 6
- 221.10 Assist jointly with BFT to do a transit “On Board Survey”. Includes design of survey and consultant work. P, 4
- 221.11 PTBA Requests – Assist BFT in document data needs for population, routes, demographics, revenue, mapping, etc. O, P, 6

<b>221</b>	<b>LOCAL</b> <b>\$68,000</b>	<b>FHWA/FTA</b> <b>\$92,000</b>	<b>\$160,000 (221 MPO)</b>
<b>221</b>	<b>RTPO (State)</b>	<b>\$30,000</b>	<b><u>\$30,000 (221 RTPO)</u></b> <b><u>\$190,000 TOTAL</u></b>
<b>221</b>		<b>FTA</b> <b>\$20,000</b>	<b>\$20,000 (HSTP)</b>

## 222 — Traffic Data Management and Monitoring Programs

This activity category provides a whole array of data collection, analysis and processing services required to maintain program activities described in other categories within this work program.

Traffic data, population and employment data and functional classification system information are all presently stored within the BFCG computer system. Maintenance of this data permits local, state, and federal agencies, as well as private individuals, excellent opportunities for obtaining base data for virtually any type of program or project. In addition, much of the data is used for Tri-MATS activities such as traffic modeling, transit route analysis, and special projects.

- 222.1 Transportation Model – Major update of the Transportation Model for the Tri-Cities Urban Area i.e. includes software updates, data collection needs, consultant work, demographic information, 2010 Census Transportation Planning Package, TAZ updates, etc. O, P, 4
- 222.2 Traffic Counting program – Complete annual requested traffic counting program of locations throughout the Tri-Cities Metropolitan Area. Spreadsheet of counts will be available on line at the BFCG web-site. Update “Physical” traffic counts in the RTPO as needed. O, P, 2
- 222.3 Assist and supplement countywide efforts on freight/truck counts to support data collection for FMSIB and other all weather road projects. P, 4

<b>222</b>	<b>LOCAL</b> <b>\$ 30,000</b>	<b>FHWA/FTA</b> <b>\$ 87,304</b>	<b>\$ 117,304 (222MPO)</b>
<b>222</b>	<b>RTPO (State)</b>	<b>\$ 16,521</b>	<b><u>\$ 16,521 (222 RTPO)</u></b> <b><u>\$ 133,825 TOTAL</u></b>

## **223 - RTPO Long-Range Transportation Planning & Washington State Transportation Plan Issues**

- Assist WSDOT in transportation plans like the Highway System Plan, Moving Washington, State Freight Plan Update, and Multimodal Plan. O, P, 6
- Continue developing strategies for funding and prioritization of all-weather roads in the RTPO. O, 4
- Continuation of Implementation of the CRCS Project. O, 4, 1
- Monitor and address the state climate change requirements. O, 5
- Incorporate pertinent statewide aspects in the RTP update. O, 6
- Assist and work with South Central Region WSDOT on Corridor studies and other transportation requests. O, 2

**223**

**RTPO (State)**

**\$52,415**

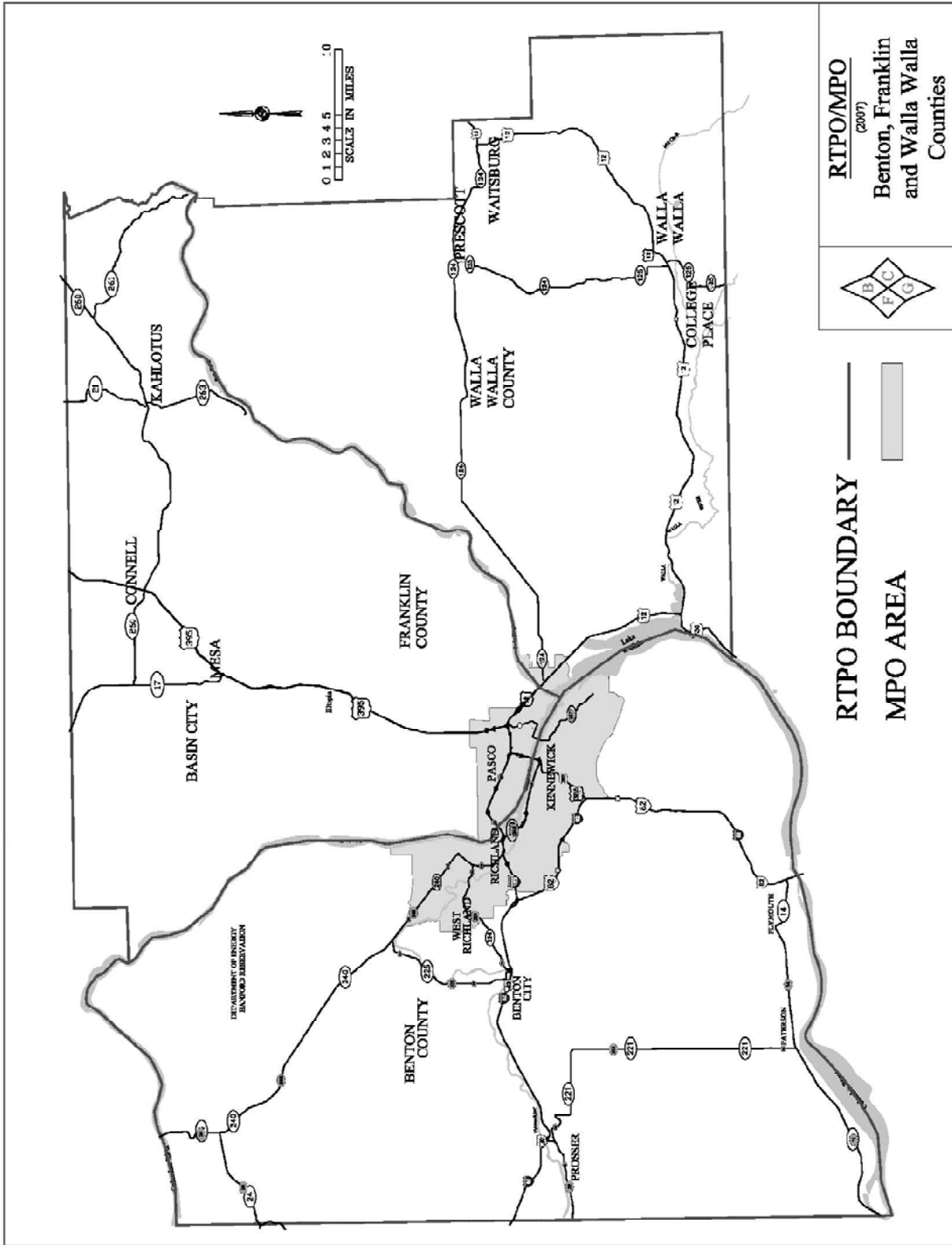
**TRI-CITIES METROPOLITAN AREA  
TRANSPORTATION STUDY AND RTPPO  
2012 UNIFIED PLANNING WORK PROGRAM  
REVENUE SUMMARY**

	LOCAL	FHWA/FTA	RTPPO/Legislative	TOTAL
220 PROGRAM ADMINISTRATION & MANAGEMENT	50,000	127,000	30,000	207,000
221 REGIONAL TRANSPORTATION PRODUCTS	68,000	92,000	30,000	190,000
222 DATA MANAGEMENT & MONITORING PROGRAMS	30,000	87,304	16,521	133,825
224 LONG RANGE PLANNING			52,415	52,415
TOTALS	148,000	306,304	128,936	583,240

**TRI-CITIES METROPOLITAN AREA  
TRANSPORTATION STUDY AND RTP  
2012 UNIFIED PLANNING WORK PROGRAM  
EXPENDITURE SUMMARY**

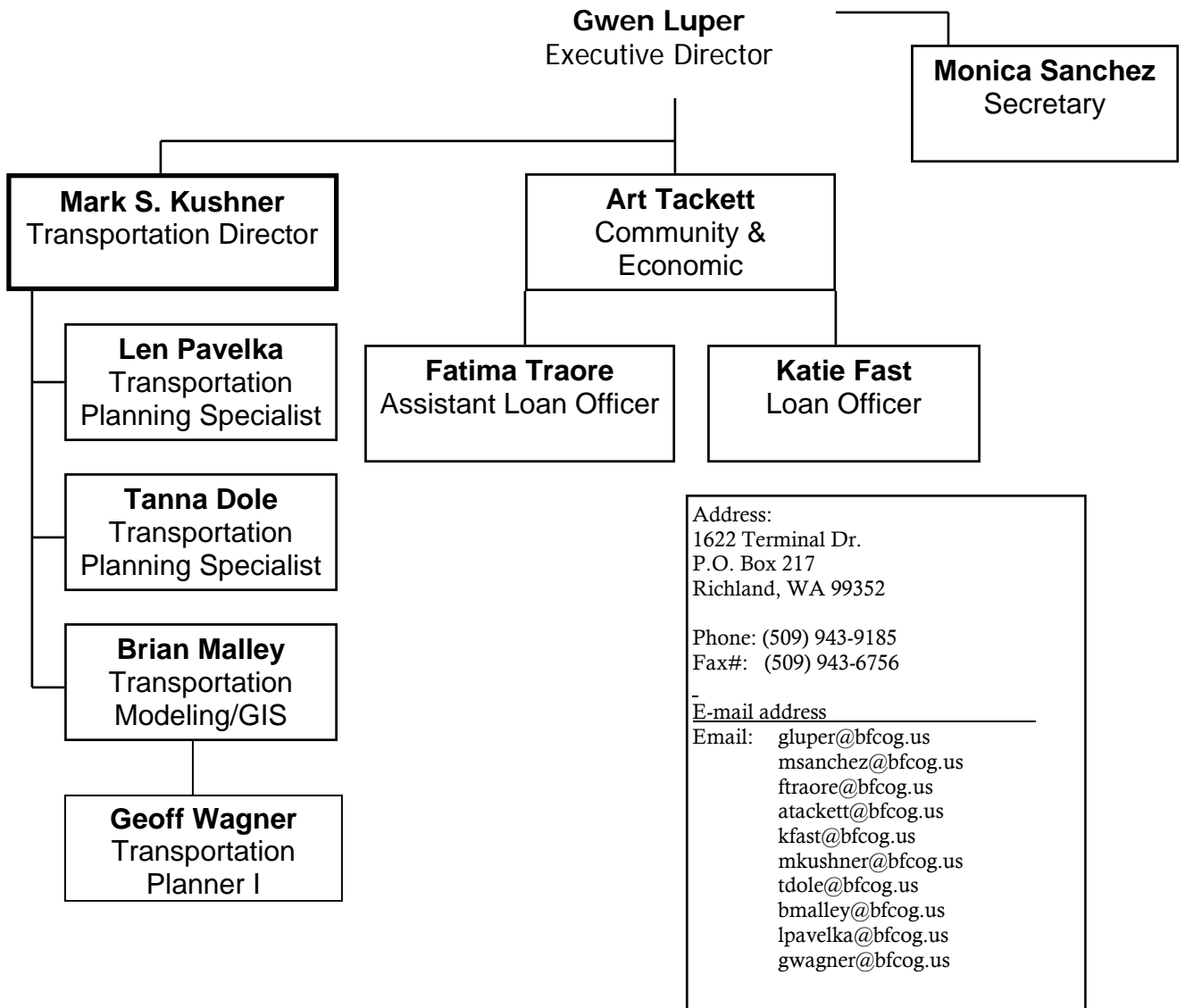
		DIRECT				
		SALARIES	TRAVEL	MISC	OVERHEAD	TOTAL
220	PROGRAM ADMINISTRATION & MANAGEMENT	85,500	2,500	2,795	116,705	207,000
221	REGIONAL TRANSPORTATION PRODUCTS	78,000	822	4,084	107,094	190,000
222	DATA MANAGEMENT & MONITORING PROGRAMS	55,000	1,254	2,056	75,515	133,825
224	LONG RANGE PLANNING & WTP UPDATE	21,750	502	300	29,863	52,415
	COLUMN TOTALS	239,750	5,078	9,235	329,177	583,240

# MPO/RTPO Boundaries Map



# Benton-Franklin Council of Governments

2011  
Staff Chart



## TRI-MATS RTPO POLICY ADVISORY COMMITTEE 2011 Committee Members

Jerome Delvin o	(360) 786-7614	WA State Senate
Mike Hewitt o	527-4111	WA State Senate
Mark Schoesler o	659-1909	WA State Senate
Maureen Walsh o	509-200-1232	WA St. House of Representatives
Terry Nealey o	360-786-7828	WA St. House of Representatives
Susan Fagan o	360-786-7942	WA St. House of Representatives
Joe Schmick o	360-786-7844	WA St. House of Representatives
Brad Klippert o	308-2231	WA St. House of Representatives
Larry Haler o	308-1957	WA St. House of Representatives
Dave Rose	946-5116 (W) 627-5266 (H)	City of Richland, Council Member
Leo Bowman	736-3080	Benton County, Commissioner
Bob Koch	545-3535 (W)	Ben Franklin Transit (Franklin County Commissioner)
Tony Benegas	851-4228 (W)	City of West Richland, Council Member
Brad Peck	545-3535 (W)	Franklin County, Commissioner
Bob Olson	539-6150	City of Kennewick, Council Member
Bob Hoffmann	547-7373 (H)	City of Pasco, Council Member
Bill Clark	509-863-4702	Port of Pasco, Commissioner
Don Whitehouse	577-1620	WSDOT South Central Region, Administrator
Bob Larson	375-1547 (H)	Port of Benton, Commissioner
Randy Taylor, Vice-Chair	875-4367 (W)	City of Prosser, Council Member
Skip Novakovich	586-7858 (W)	Port of Kennewick, Commissioner
Lee Barrow	234-2701	City of Connell, Council Member
Austin Davis	265-4259	City of Mesa, Mayor
Lloyd Carnahan	588-3430	City of Benton City, Mayor
Richard Halverson	282-3372	City of Kahlotus, Mayor
Gregg Tompkins	524-2505 (W)	Walla Walla County, Commissioner

Jerry Cummins, <i>Chair</i>	525-8848	City of Walla Walla, Council Member
Rick Newby	527-6233	City of College Place, Mayor
Walt Gobel	337-9177, 521-1347	City of Waitsburg, Mayor
Elizabeth McCaw	849-2621	City of Prescott, Mayor
Ron Dunning	529-6043	Port of Walla Walla, Commissioner
Gregg Loney	525-1292	Valley Transit, Board Member
Carol Moser	627-5198 (H)	Washington State Trans. Commission
Staff - Mark Kushner	943-9185	BFCG, Transportation Director

- o Ex-officio Member

12/14/10

## TRI-MATS RTPO TECHNICAL ADVISORY COMMITTEE 2011 Committee Members

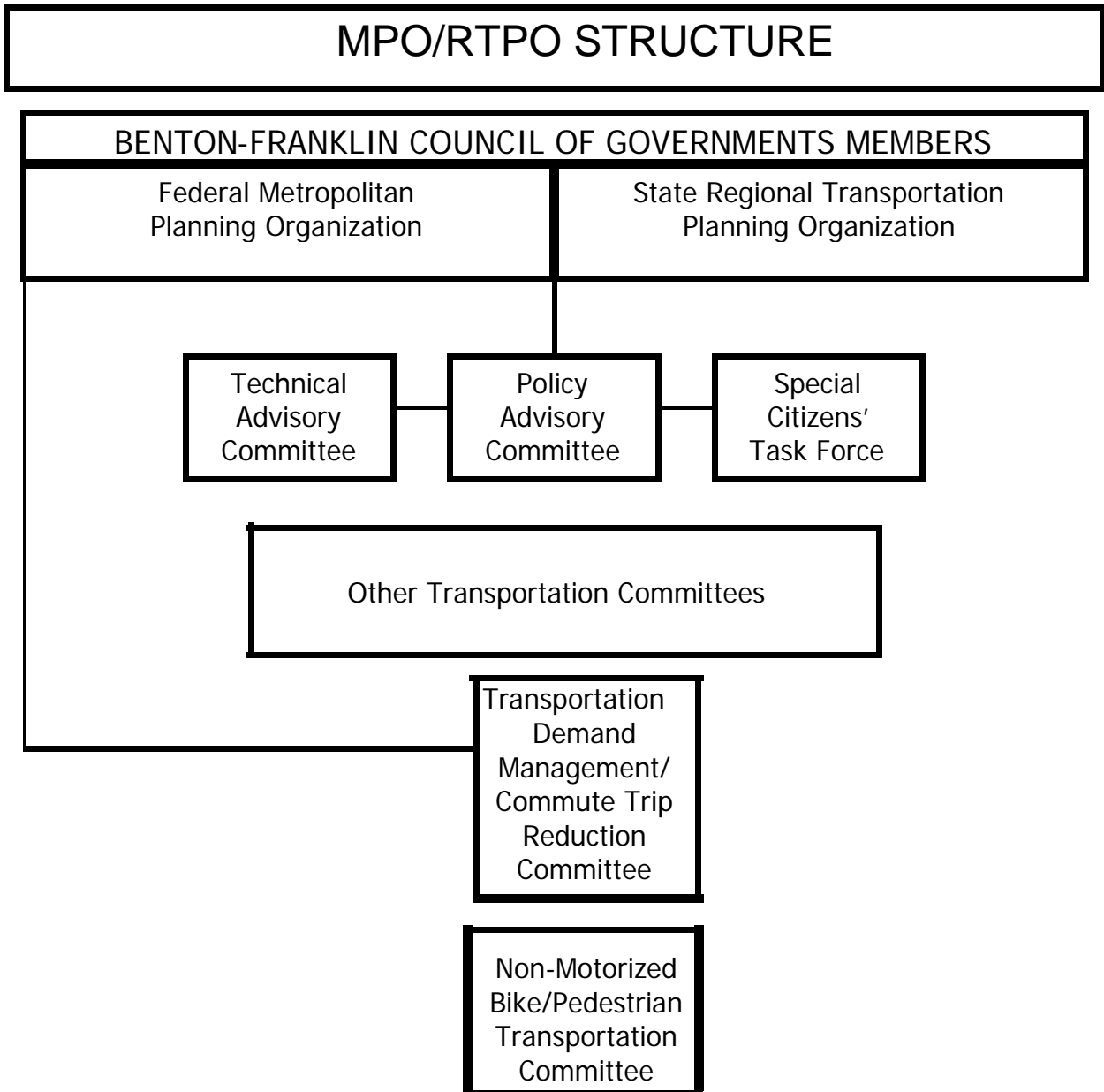
Tim Fife	545-3514	Franklin County Engineer/Public Works Director tfife@co.franklin.wa.us
Malcolm Bowie, Vice - Chair	736-3084	Benton County Engineer malcolm.bowie@co.benton.wa.us
Kathy McMullen	734-5107	BFT, Manager of Transit Development kmcullen@bft.org
Ahmad Qayoumi	545-3446	City of Pasco, Public Works Director qayoumia@pasco-wa.gov
Steve Stairs	942-7504	City of Richland, Traffic Engineer sstairs@ci.richland.wa.us
Roscoe Slade	967-7105	City of West Richland, Public Works Director roscoe@westrichland.org
Randy Hayden, Chair	547-3378	Port of Pasco, Engineer rhayden@portofpasco.org
Paul Gonseth	577-1630	WSDOT Planning Engineer, Yakima gonsetp@wsdot.wa.gov
Roger Wright	366-7455	Port of Benton, Engineering Consultant roger@rgwenterprises.com
Frank Powell	373-6452	Mission Support Alliance, Traffic Engineering Frank_w_powell@rl.gov
Larry Peterson	586-1188	Port of Kennewick, Director of Planning and Development lpeterson@portofkennewick.org
Ken Nelson	585-4252	City of Kennewick, Assistant Public Works Director Ken.nelson@ci.kennewick.wa.us
Vacant		Battelle N.W.,
L. J. DaCorsi	786-2332	City of Prosser, Public Works Director publicworks@cityofprosser.com
Larry Turner	234-2701	City of Connell, Public Works Director connelpw@centurytel.net

Teresa Standridge*	265-4253	City of Mesa, Clerk
cityclerkmesa@centurytel.net		
Bob Spink	946-1581	City of Benton City, Engineering Consultant
Bob.spinkengineering@frontier.com		
Sharon McCaleb*	282-3372	City of Kahlotus, City Clerk
cityofkahlotus@hotmail.com		
Randy Glaeser	524-2711	Walla Walla County Engineer/Public Works
rglaeser@co.walla-walla.wa.us		
Neal Chavre	524-4511	City of Walla Walla, City Engineer
nchavre@ci.walla-walla.wa.us		
Paul Hartwig	529-1200	City of College Place, Public Works Director
phartwig@ci.college-place.wa.us		
Randy Hinchliffe	337-6371	City of Waitsburg, Clerk
rjhinch@gotvc.net		
Vacant		City of Prescott
Paul Gerola	525-3100	Port of Walla Walla, Economic Development
pg@portwallawalla.com		
Dick Fondahn	525-9140 ext. 12	Valley Transit, Transit Manager
dick@valleytransit.com		
Mark Kushner	943-9185	BFCG/Staff, Transportation Director
mkushner@bfcog.us		
**Bill Bennion	360-705-7968	WSDOT Headquarters, Olympia (Planning)
benniob@wsdot.wa.gov		
**Jerry Ayres	705-7912	WSDOT Headquarters, Olympia (Transit)
ayresj@wsdot.wa.gov		
** Roger Arms	577-1780	WSDOT Yakima (Local Programs)
armsr@wsdot.wa.gov		

\* City Clerk

\*\* Ex-Officio Members

Updated 4/13/2011



## **Unfunded Planning Studies and Projects (Unranked)**

1. Amtrak Passenger Service Study.  
Conduct a study to evaluate the need for passenger service from Walla Walla/Pasco to Auburn.
2. Continue evaluating the transportation improvements needed for the US 395 corridor between Pasco and Kennewick.
3. Update Lewis Street/Sylvester Street/US 395 Interchange Study.
4. Stampede Pass Freight Issue Study.
5. I-82 Interchange Red Mountain Study –Various Phases.
6. Regional Freight Profile – Compile and update if necessary, freight data elements. Determine what other elements may be beneficial.

## Acronyms List

<b>Acronym:</b>	<b>Stands For:</b>
ADA	The Americans with Disabilities Act of 1990
ADT	Average Daily Traffic
AWV	Average Weekday Volume
BFCG or BFCOG	Benton-Franklin Council of Governments
BFT	Ben Franklin Transit
BFWW	Benton-Franklin-Walla Walla
BFWWGRTA	Benton-Franklin-Walla Walla Counties Good Roads and Transportation Association
CAD	Computer Aided Drafting
CMP	Corridor Master Plan, or Corridor Management Plan
CRAB	County Road Administration Board
CAPP	County Arterial Preservation Program
RAP	Rural Arterial Program
CRCS	Columbia River Crossing Study Tri-Cities
CRT	Community Round Table
CTR	Commute Trip Reduction (Program)
CTR	Commute Trip Reduction
DNS	Determination of Non Significance
DOE	U.S. Department of Energy
EA	Environmental Assessment
EIS	Environmental Impact Statement
EWITS	Eastern Washington Intermodal Transportation Study
FGTS	Freight & Goods Transportation System
FHWA	Federal Highway Administration
FMSIB	Freight Mobility Strategic Investment Board
FTA	Federal Transit Administration
GIS	Geographic Information System
GMA	Growth Management Act
HCM	Highway Capacity Manual
HOV	High Occupancy Vehicle
HQ	(WSDOT) Headquarters
HSP	Highway System Plan
HSTP	Human Service Transportation Plan
HSS	Highways of Statewide Significance
ISTEA	Intermodal Surface Transportation Efficiency Act of 1991
LOS	Level of Service
MPO	Metropolitan Planning Organization
MTP	Metropolitan Transportation Plan
NAAQS	National Ambient Air Quality Standards
NEPA	National Environmental Policy Act
NHS	National Highway System
NSB	National Scenic Byways

PAC	Policy Advisory Committee
PTBA	Public Transportation Benefit Area
RAMPS	Roadway Access Management Permits System
RCW	Revised Code of Washington
RTP	Regional Transportation Plan
RTPO	Regional Transportation Planning Organization
RTS	Regional Transportation System
R/W	Right of Way
SAFETEA-LU	Safe, Accountable, Flexible, Efficient Transportation Equity Act – A Legacy For Users
SCR	South Central Region
SEPA	State Environmental Policy Act
SOV	Single Occupancy Vehicle
SR	State Route (route designation)
STIP	Statewide Transportation Improvement Program
STP	Surface Transportation Program
STRAHNET	Strategic Highway Network
TAC	Technical Advisory Committee
TCM	Transportation Control Measures
TDM	Transportation Demand Management
TE	Transportation Enhancement
TEA-4	(Anticipated 4 <sup>th</sup> Federal) Transportation Equity Act
TEA-21	Transportation Equity Act for the 21 <sup>st</sup> Century
TIB	Transportation Improvement Board
CHAP	City Hardship Assistance Program
PSMP	Pedestrian Safety & Mobility Program
PTSP	Public Transportation Systems Program
SCAP	Small City Arterial Program
SCPP	Small City Preservation Program
SCSP	Small City Sidewalk Program
TPP	Transportation Partnership Program
UAP	Urban Arterial Program
UCP	Urban Corridor Program
TIP	Transportation Improvement Program
TMA	Transportation Management Area
TRI-MATS	Tri-Cities Metropolitan Area Transportation Study
TSM	Transportation Systems Management
UPWP	Unified Planning Work Program
US	United States (route designation)
VMT	Vehicle Miles Traveled
WAC	Washington Administrative Code
WA-Trans	Washington Transportation Framework Project (GIS)
WSDOT	Washington State Department of Transportation
WSGRTA	Washington State Good Roads Transportation Association
WSRO	Washington State Rideshare Organization
WSTC	Washington State Transportation Commission
WTP	Washington Transportation Plan